



01452 690553



sales@applebys.estate



www.applebysestateagents.co.uk



37 Redwood Close

, Gloucester, GL1 5TZ

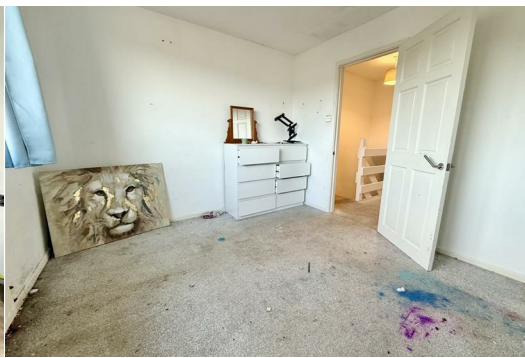
£185,000

2 1 1 D

This two bedroom home is fantastic opportunity for those looking to create their dream home, although in need of updating, the property is realistically priced to sell !

Located in a popular location benefitting GARAGE & OFF ROAD PARKING.

Don't miss out on the chance to put your own stamp on this property***CHAIN FREE***



Entrance Hall

Kitchen 9'6 x 5'6 (2.90m x 1.68m)

Lounge/Dining Room 17'7 x 12'0 (5.36m x 3.66m)

Bedroom 1 12'0 x 10'0 (3.66m x 3.05m)

Bedroom 2 12'1 x 8'3 (3.68m x 2.51m)

Bathroom

OUTSIDE

Situated on a NO THROUGH road, GARAGE and parking space to the rear.

The front & rear gardens are laid to lawn, gated side access to the garden with personnel door to the GARAGE and rear gate.

Services

Mains drainage, gas central heating
Gloucester City Council tax band B

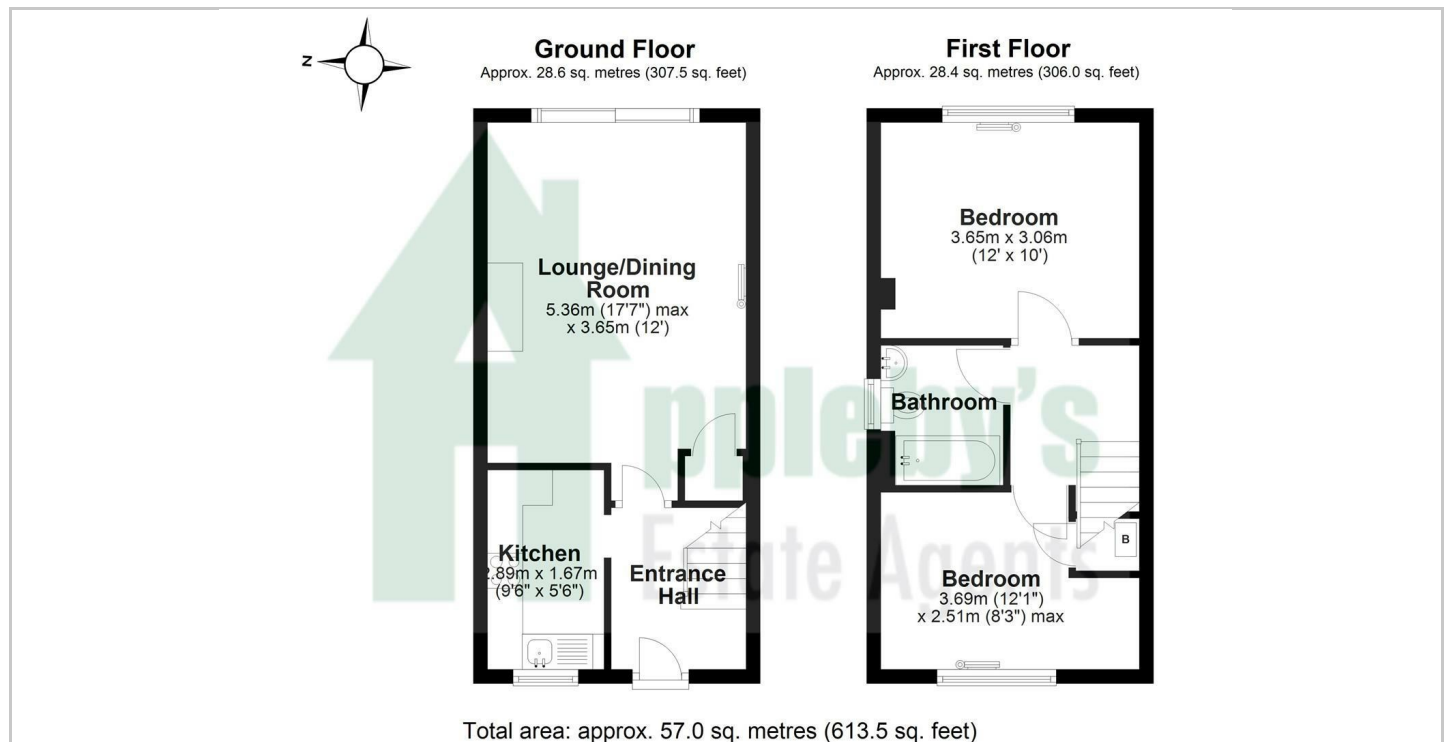
Tenure

Freehold

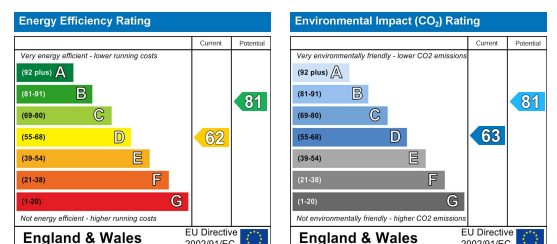
Area Map



Floor Plans



Energy Efficiency Graph



These particulars, whilst believed to be accurate are set out as a general outline only for guidance and do not constitute any part of an offer or contract. Intending purchasers should not rely on them as statements of representation of fact, but must satisfy themselves by inspection or otherwise as to their accuracy. No person in this firm's employment has the authority to make or give any representation or warranty in respect of these particulars.